

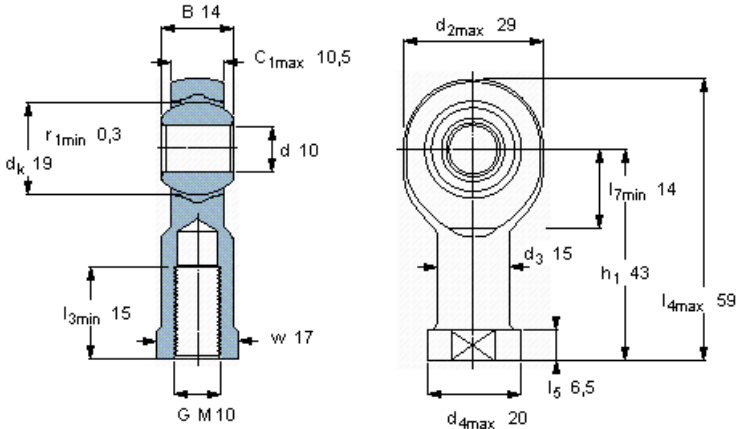
Maintenance-free rod ends, female thread, steel/PTFE FRP

Product information



Tolerances , see also text
Radial internal clearance, see also text
- Steel/sinter bronze composite
- Steel/PTFE fabric
- Steel/PTFE composite

Principal dimensions						Angle of tilt	Basic load ratings		Mass	Designation
d	d ₂ max	B	G 6H	C ₁ max	h ₁	±	dynamic C	static C ₀		Rod end with right or left-hand thread
mm						degrees	kN		kg	-
10	29	14	M 10	10,5	43	13	9,8	14,3	0,079	SIKB 10 F



Tolerances
d₃ 6H
w h14

Specific load factor
K 50

Material constant
K_M 530